

**Ing. Giovanna Antonella Dino**

Dipartimento di scienze della Terra

Università di Torino

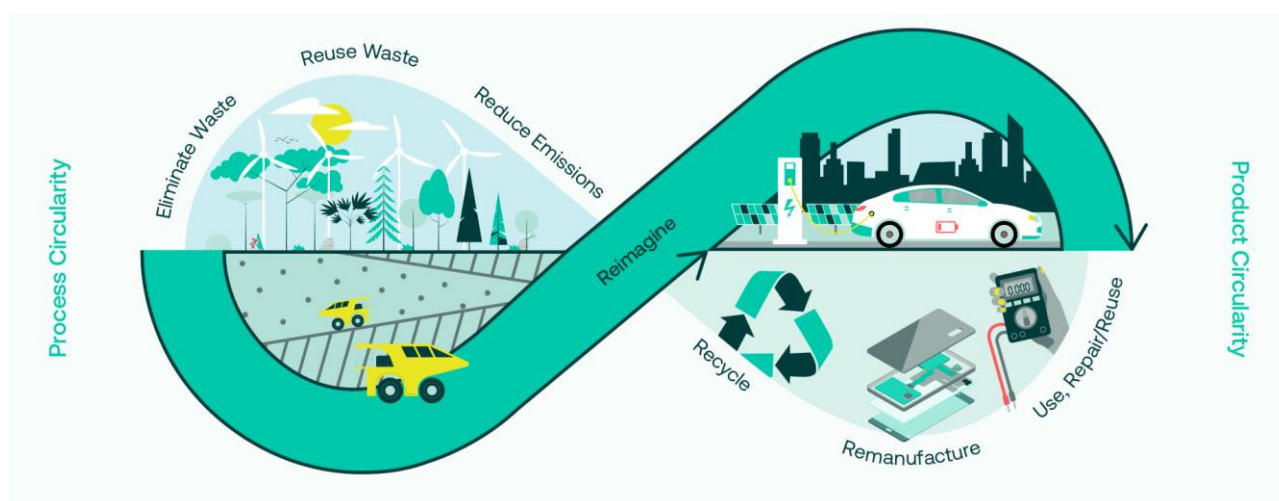
**15/11/2023 ore 9:30-10:20**

**Approvvigionamento materie prime:  
dalle cave al costruito (applicazioni in  
ambito civile ed edile)**



e ore 10:30-11:20

# Economia circolare ed attività estrattiva



I seminari si terranno online al link:

[https://teams.microsoft.com/l/meetup-join/19%3ameeting\\_YzhiMDkwNTktYTdhOS00NjU1LThmNWmtYzZmY2U1OTdmMmRj%40thread.v2/0?context=%7b%22id%22%3a%2241f8b7d0-9a21-415c-9c69-a67984f3d0de%22%2c%220id%22%3a%22c6b769ca-fa87-4837-9d03-e20e2d884b59%22%7d](https://teams.microsoft.com/l/meetup-join/19%3ameeting_YzhiMDkwNTktYTdhOS00NjU1LThmNWmtYzZmY2U1OTdmMmRj%40thread.v2/0?context=%7b%22id%22%3a%2241f8b7d0-9a21-415c-9c69-a67984f3d0de%22%2c%220id%22%3a%22c6b769ca-fa87-4837-9d03-e20e2d884b59%22%7d)